

BRADY PLAZA

3652 BRADY STREET ~ DAVENPORT, IOWA



RETAIL SPACE FOR LEASE

- 69,000 SF Shopping Center
- 22,700 SF available
- Anchored by Big Lots!
- Est. 2010 CAMIT: \$2.73/SF
- Expansion space available to build up to 30,000 square feet of additional retail space adjoining Big Lots

Brady Plaza is located just south of the busiest intersection in eastern Iowa at Kimberly Road and Brady Street. With its immediate proximity to Northpark Mall, just around the corner, Brady Plaza enjoys excellent traffic and visibility. Northpark Mall is one of Iowa's largest super regional shopping centers and is anchored by Sears, Von Maur, JC Penney and Youngkers.

DEMOGRAPHICS

	<u>3 mile</u>	<u>5 mile</u>
Population	78,445	163,425
Avg. HH Income	\$61,186	\$60,977
Per Capita Income	\$25,602	\$25,310

CONTACT

JEFF DANIELS realsubmit@yahoo.com
 OFFICE 515-277-4000
 CELL 515-556-5656
 FAX 515-277-5976



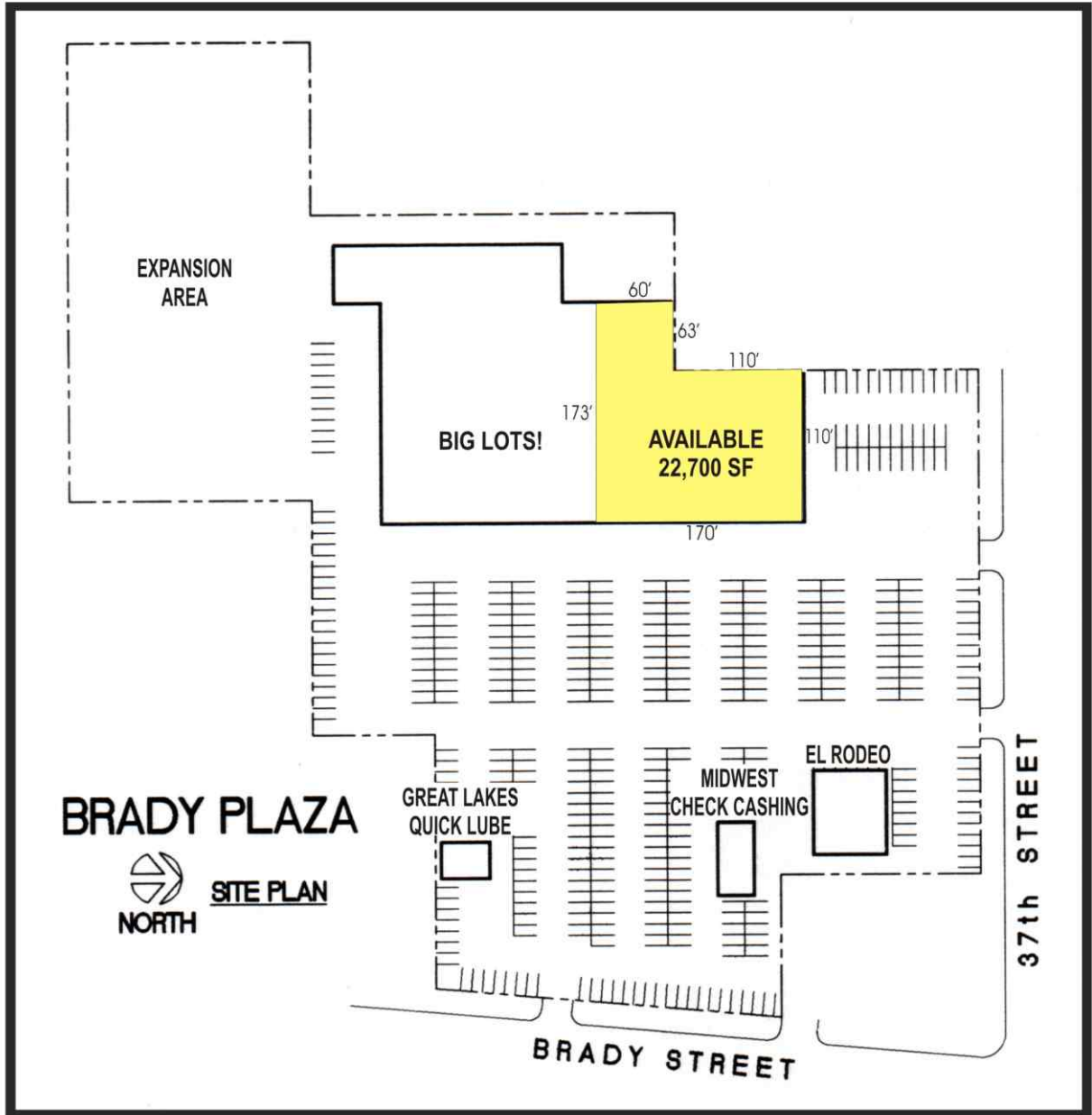
A MEMBER OF
 CHAINLINKS
 RETAIL ADVISORS

www.buyersrealtyinc.com

BRADY PLAZA

3652 BRADY STREET ~ DAVENPORT, IOWA

SITE PLAN



BRADY PLAZA



SITE PLAN

37th STREET

BRADY STREET

**BUYERS
REALTY**

A MEMBER OF
CHAINLINKS
RETAIL ADVISORS

www.buyersrealtyinc.com

3101 INGERSOLL AVENUE ~ DES MOINES, IOWA 50312 ~ PHONE: 515-277-4000 ~ FAX: 515-277-5976

Revised 1/20/10