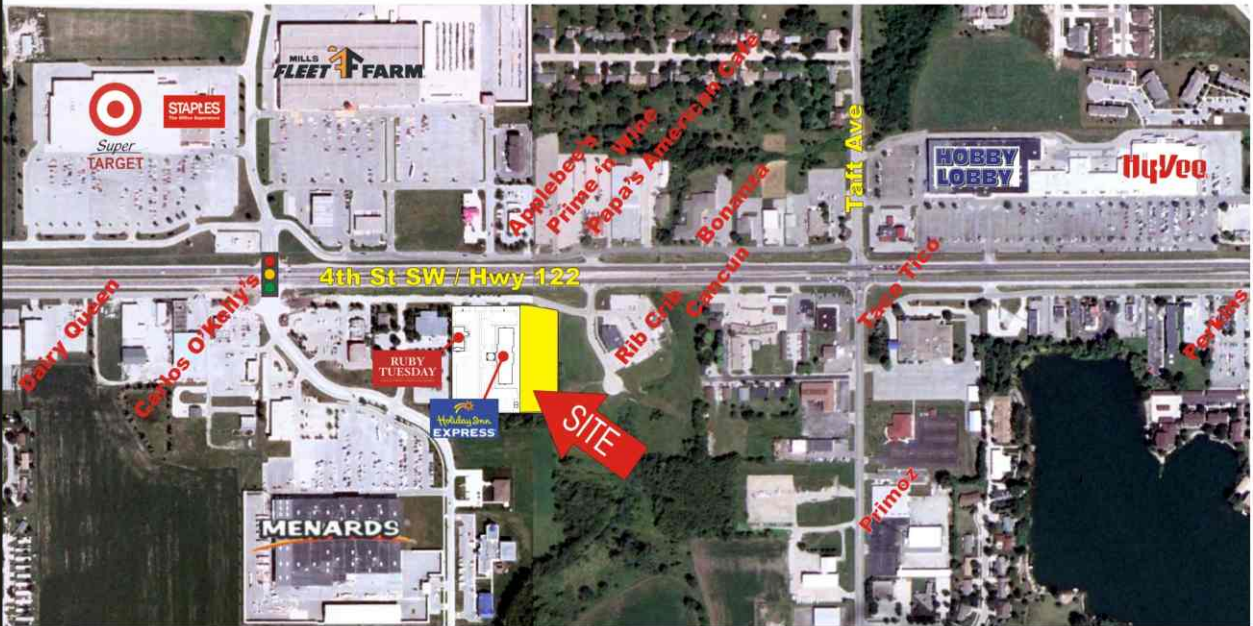


HOLIDAY INN EXPRESS - OUTPARCEL 3041 4TH STREET SW (HWY 122) ~ MASON CITY, IOWA



RETAIL OUTLOT FOR SALE

- 170' Frontage x 480' Depth
- Adjacent to New Holiday Inn Express and Ruby Tuesday Restaurant
- Zoned Commercial
- Developer will build-to-suit

1.9 acre retail lot available on prime retail corridor. Adjacent retailers include Walmart, Menard's, Best Buy, Kohl's, Super Target, Staples, Mills Fleet Farm, Hobby Lobby and Hy-Vee. Superior location on Iowa Hwy 122 - 4th St SW in Mason City, IA.

DEMOGRAPHICS

	3 mile	5 mile
Population	18,755	28,308
Avg. HH Income	\$54,156	\$57,858
Per Capita Income	\$24,375	\$25,423

CONTACT

DAVE LITTLE dlittle@buyersrealtyinc.com
 OFFICE 515-277-4000
 CELL 515-865-2422
 FAX 515-277-5976



A MEMBER OF
 CHAINLINKS
 RETAIL ADVISORS

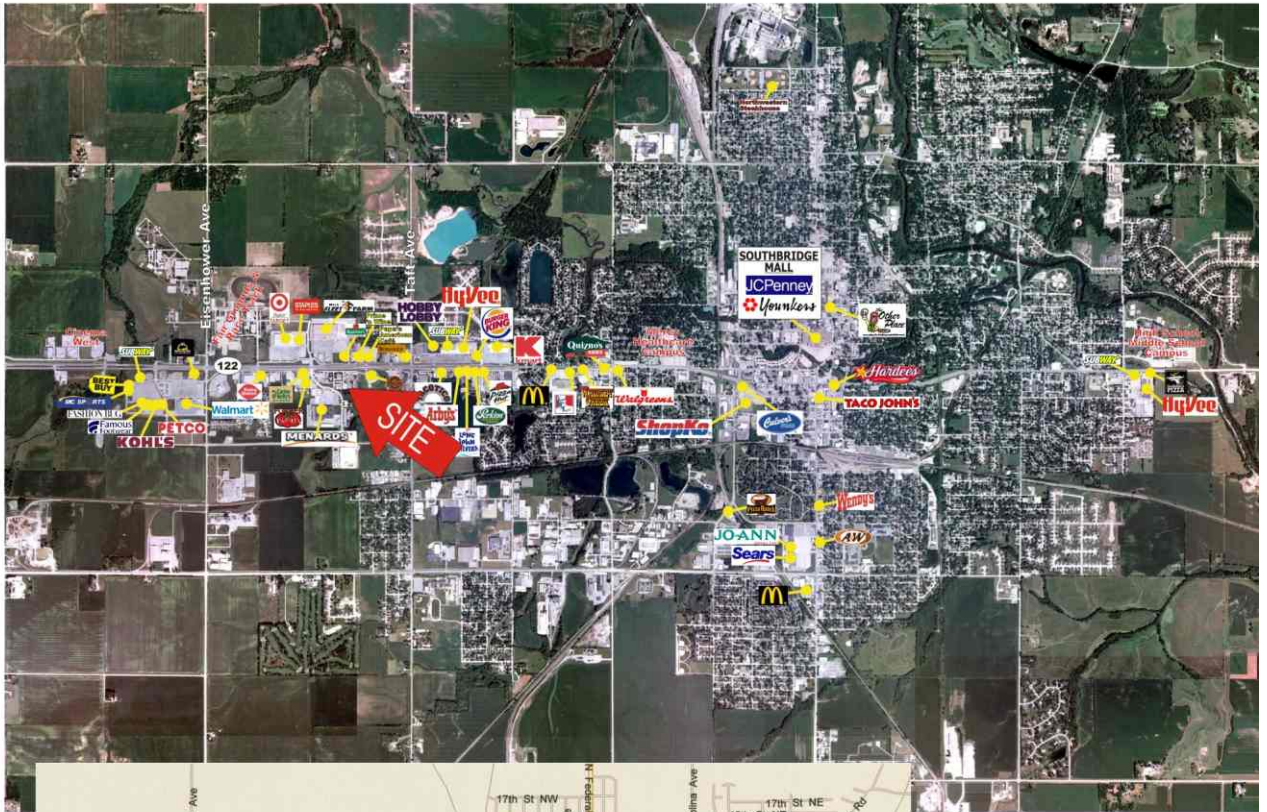
www.buyersrealtyinc.com

3101 INGERSOLL AVENUE ~ DES MOINES, IOWA 50312 ~ PHONE: 515-277-4000 ~ FAX: 515-277-5976

HOLIDAY INN EXPRESS - OUTPARCEL

3041 4TH STREET SW (HWY 122) ~ MASON CITY, IOWA

LOCATION



A MEMBER OF
CHAINLINKS
 RETAIL ADVISORS

www.buyersrealtyinc.com

3101 INGERSOLL AVENUE ~ DES MOINES, IOWA 50312 ~ PHONE: 515-277-4000 ~ FAX: 515-277-5976

Revised 8/23/10