

# JORDAN CREEK CENTRE

230 SOUTH 68TH STREET ~ WEST DES MOINES, IOWA



**Great Rental Deal**

## RETAIL/OFFICE SPACE FOR LEASE

- Directly across the street east of Jordan Creek Town Center Mall
- Adjacent to regional retail, hotels, office and residential
- Easy access to Interstates 35 & 80
- High growth market area

Approximately 13,000 square feet of leaseable building area available on two floors of a three story mixed use building. The third floor is residential condos.

Located across the street directly east of Jordan Creek Town Center, this location offers excellent access and great exposure in a high growth area of West Des Moines.

- Attractive building
- Strong tenant mix
- Elevator
- Extremely well located
- Newer construction

### CONTACT

ROBB LYDON [rselect50322@yahoo.com](mailto:rselect50322@yahoo.com)  
OFFICE 515-277-4000  
CELL 515-979-3752  
FAX 515-277-5976



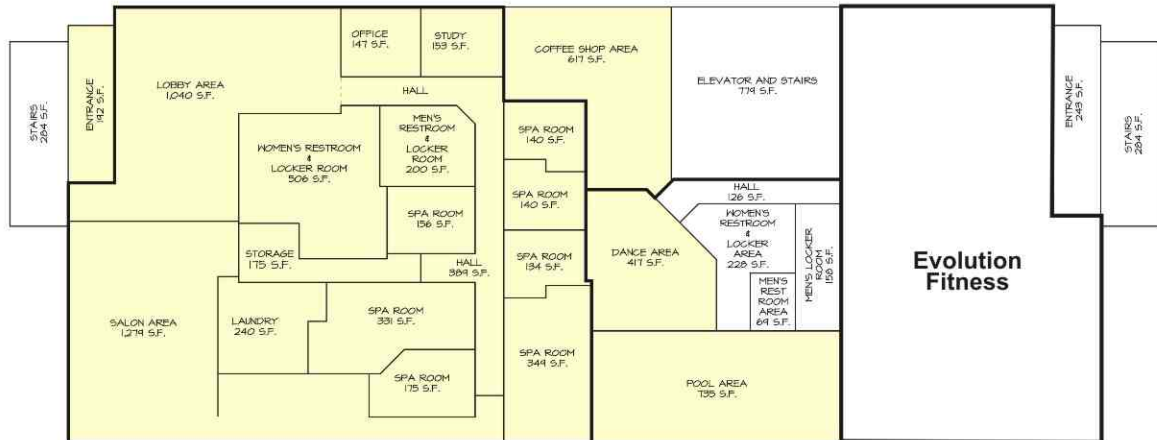
A MEMBER OF  
CHAINLINKS  
RETAIL ADVISORS

[www.buyersrealtyinc.com](http://www.buyersrealtyinc.com)

# JORDAN CREEK CENTRE

## 230 SOUTH 68TH STREET ~ WEST DES MOINES, IOWA

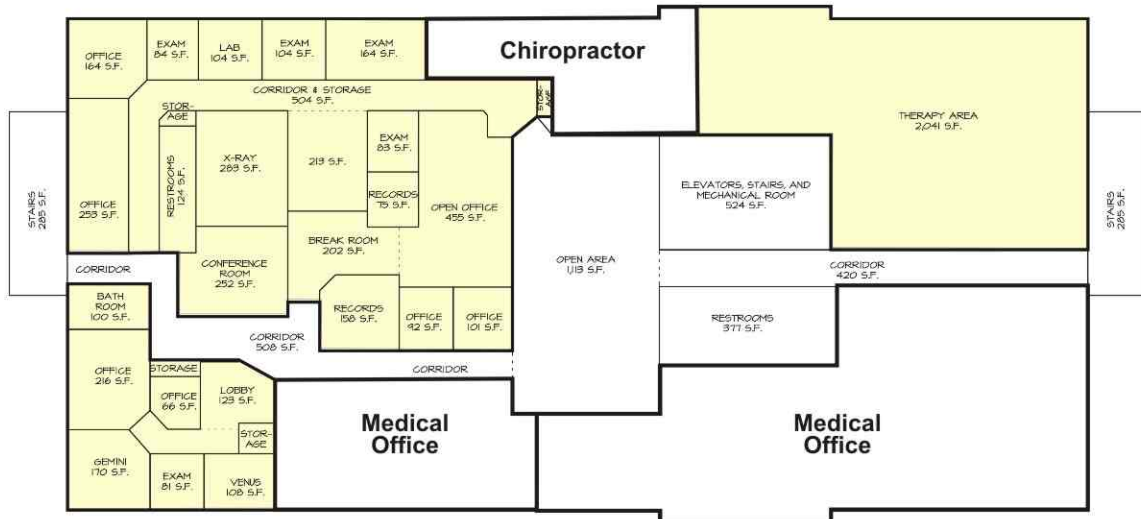
### SITE PLAN



✦ First floor: Excellent access and great exposure for retail or office users

✦ 2,000 - 8,000 sq. ft. available for lease at ~~\$17.00~~/sq. ft. NNN

**\$12.00**



✦ Second floor: Great office space with central reception and elevator

✦ 1,500 - 5,000 sq. ft. available for lease at ~~\$14.50~~/sq. ft. NNN

**\$12.00**



A MEMBER OF  
CHAINLINKS  
RETAIL ADVISORS

[www.buyersrealtyinc.com](http://www.buyersrealtyinc.com)

3101 INGERSOLL AVENUE ~ DES MOINES, IOWA 50312 ~ PHONE: 515-277-4000 ~ FAX: 515-277-5976